



# Sustainability Report

January 2023 - December 2023

# Contents of the Report

## Introduction

Introduction

About Ela Green

Our Vision

Our Commitment

## People

Students

Faculty, diversity  
and gender equality

Partnership and  
Collaboration

## Transperancy.

Overview

Scope 3 - Inclusions &  
Omissions

## Action

Environment

Social

Governance



# INTRODUCTION

It is with great pride and enthusiasm that we present our inaugural sustainability report, extending our warmest greetings to our valued students, faculties, staff and stakeholders within and beyond the Ela Green community.

Ela Green School is unwavering in its commitment to fostering positive change in the world, and we believe in doing so with utmost transparency and accountability. Our sustainability report serves as a testament to our dedication to responsible practices and our journey towards making a lasting impact.

As a school passionate about nurturing both minds and the environment, Ela Green is a relatively young institution, yet our commitment to sustainability is deeply rooted in our ethos. Recognizing the pivotal role education plays in shaping future leaders and stewards of the planet, our reporting requirements align with our dedication to instill responsible practices in our community.

In 2022, Ela Green School made a decision to achieve net-zero carbon emissions by 2030. The forthcoming sections of this report will provide detailed insights into the progress we have made towards this commitment, as we strive to set new benchmarks in sustainable education.



## MESSAGE FROM OUR DIRECTOR



*"Together, we aspire to create a future where sustainability is not just a commitment but a way of life."*

I founded Ela Green School in 2018 with the prime aim of providing education that focuses on real-world skills that cater to the ever-changing global scenario along with sowing seeds of sustainability and community in children at an early age.

Though we may be a school of modest size, our dedication knows no bounds. Ela Green School is steadfast in its commitment to leading by example, proving that even a small institution can catalyze significant positive change. The belief that children from Ela will be excellent leaders of tomorrow, inspiring many others and making a difference, keeps the drive towards excellence in everything I aspire to achieve for the school, alive.

In the spirit of transparency, we acknowledge that we are at the initial stages of our sustainability journey. Compiling this inaugural report has been enlightening, revealing the vast potential for growth and improvement. Ela Green School is poised to set measurable metrics, ensuring continuous enhancement year after year.

We express our sincere gratitude to our community for their continued support. Together, we aspire to create a future where sustainability is not just a commitment but a way of life.



## OUR VISION

At [Ela Green School](#), our mission is to cultivate a transformative educational environment that goes beyond traditional learning, empowering students to thrive academically, socially, and environmentally.

Rooted in sustainability, we are dedicated to nurturing resilient learners who embody a profound sense of responsibility towards themselves, their communities, and the planet. Our commitment extends beyond the classroom, fostering a generation of lifelong learners equipped with the skills and values to create a harmonious and sustainable world.

[Ela Green School](#) envisions a future where education transcends boundaries, creating compassionate and globally aware individuals. Our vision is to be a beacon of excellence in holistic education, inspiring students to become conscientious leaders who drive positive change.

We aspire to be a green haven of learning, where each child not only acquires knowledge but also develops a deep connection with nature, cultivates a sense of social responsibility, and emerges as a catalyst for a sustainable and harmonious world.


Through our commitment to green building practices, environmental education, and fostering real-world skills, [Ela Green School](#) strives to be a catalyst for a future where education and sustainability coalesce to shape compassionate, informed, and empowered citizens.



# OUR COMMITMENT



*At Ela Green School, our primary focus is to inspire and educate the future stewards of the planet. Recognizing the integral role education plays in shaping environmentally conscious individuals, we are committed to leading by example and showcasing our dedication to sustainability.*



Decarbonize our  
campus operation  
by 50% before  
2025

Achieve Carbon  
Neutrality by 2030

Yearly report  
detailing our  
progress

# PEOPLE



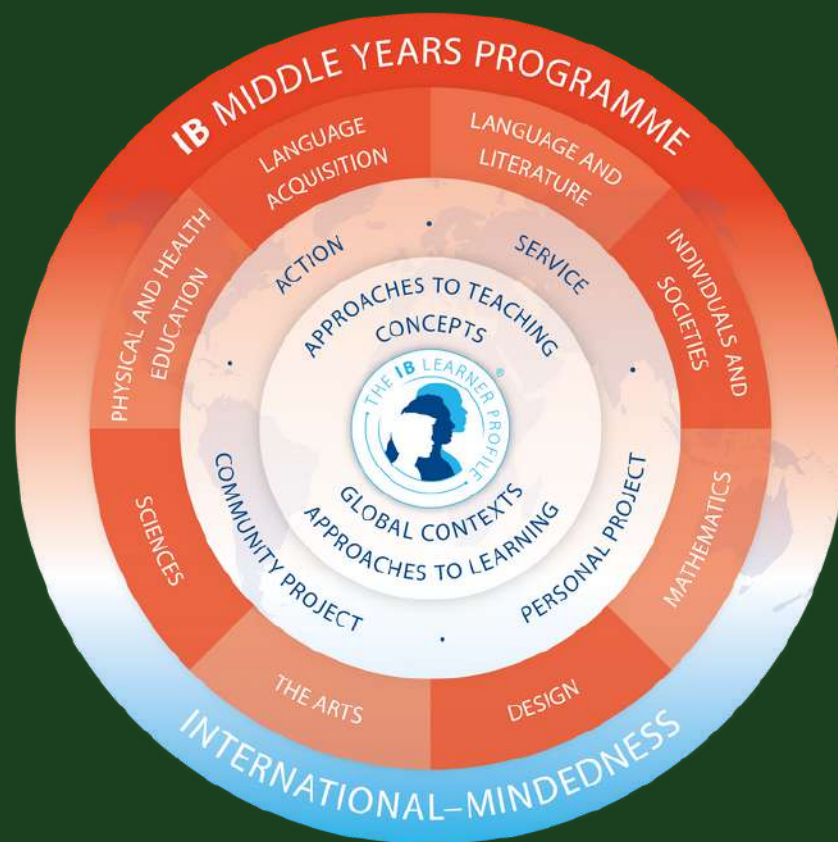
At Ela Green School, our commitment to sustainability *extends beyond* our curriculum and campus practices. We recognize the importance of supporting our employees and contributing to the broader built environment sector. While acknowledging that we are a school in the early stages of this journey, we are dedicated to transparency and believe that reporting our current initiatives is essential for tracking progress as we grow.



# STUDENTS

At Ela Green School, we envision a sustainable future shaped by a community of leaders equipped with the knowledge, skills, and mindset to confront global challenges and pioneer innovative solutions. Our commitment to sustainability is woven into the fabric of our educational philosophy, and we believe that fostering leadership begins with comprehensive and holistic development.

Ela Green School proudly follows the International Baccalaureate (IB) curriculum, a powerful vehicle that aligns seamlessly with our vision for building a sustainable future. The IB curriculum emphasizes holistic development, offering a stimulating and challenging academic program designed to nurture well-rounded individuals.



Our commitment to providing a transformative education experience goes beyond individual IB programs. Ela Green School is an IB Continuum School, seamlessly integrating the Primary Years Programme, Middle Years Programme, and the Diploma Programme.





# FACULTY, DIVERSITY AND GENDER EQUALITY

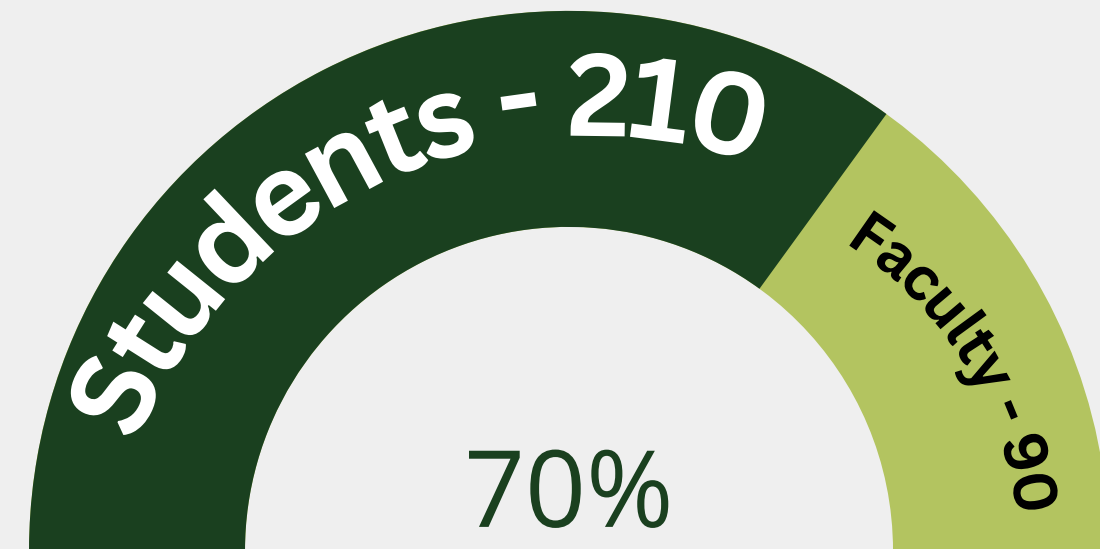


Providing ongoing training and professional development opportunities to empower our educators and staff to stay abreast of the latest educational and sustainability practices.

Professional Development Opportunities

Inclusive Practices

Ensuring inclusivity and diversity in our work culture, fostering an environment where all employees feel valued and respected.



# FACULTY, DIVERSITY AND GENDER EQUALITY



## FEMALE FACULTY

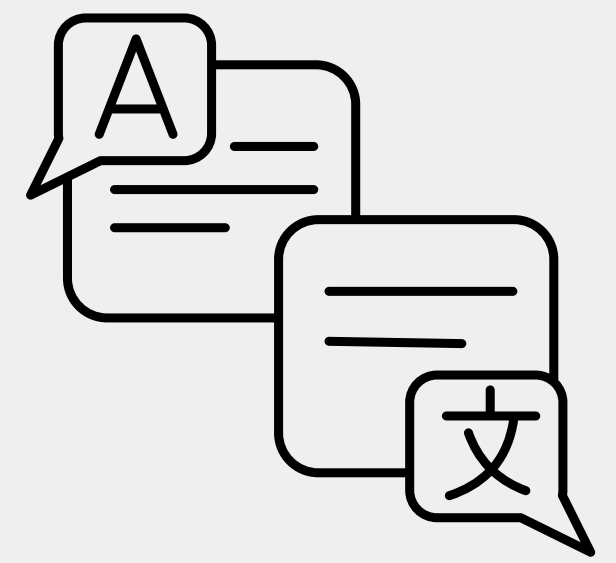


## FEMALE STAFF



## LANGUAGES SOPKEN

6+



# TRANSPARENCY



At Ela Green School, transparency is not just a value; **it's a commitment** we uphold in our journey towards sustainability.

We affirm our commitment to regular and transparent reporting on our environmental impact, showcasing the progress we make against our set targets.

Through education and awareness, we aim to foster a culture of sustainability that **extends beyond our school walls.**





# Overview

At Ela Green School, in alignment with our ambitious goal to **decarbonize our operations by 50%**, this report signifies our initial foray into comprehensive reporting. It encompasses our calculations for the **baseline year, set at 2023**.

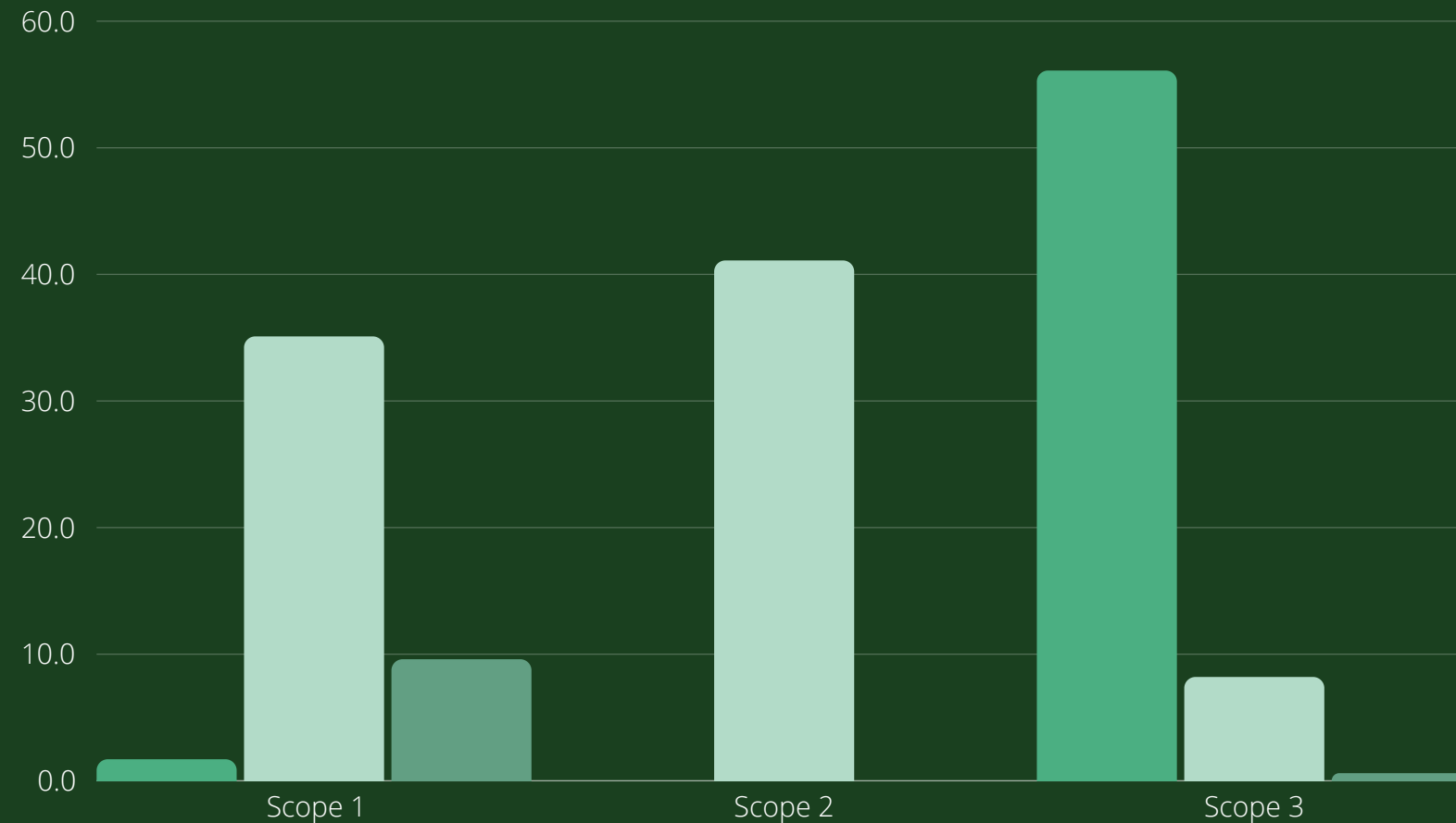
**152.4 tCO2e**

Annual CO2e emissions

**7.3 kgCO2e**

per student emission

CO2e emissions for 2023



**SCOPE 1**

**(L -R ) Fuel Sourced at site, Fugitive Emissions, and Company Vehicles.**

**SCOPE 2**

**CO2 emission from electricity drawn from the State Utility Grid**

**SCOPE 3**

**(L -R ) Goods and Services procured, Business Travel and Occupant Commuting**

While Ela Green School commenced operations in 2018, we have chosen 2023 as our baseline year for emissions calculations. This decision stems from our belief that 2023 more accurately reflects a representative baseline year for emissions.

In 2018-19, our organization had minimal staff and, subsequently, minimal impact on the environment. Additionally, given the initial challenges posed by the COVID-19 crisis, reporting on carbon impact for 2020 & 2021 would not provide an accurate baseline for our forward-looking sustainability efforts.

We choose to go beyond the norm. **While inclusion of scope 3 emissions is typically optional**, we believe in leading by example and aspire to report on as many emission categories as possible.

Scope 3 emissions, which encompass indirect emissions from sources such as **transportation, supply chain, and student commuting**, play a pivotal role in our overall carbon footprint.

This strategic focus aligns with our commitment to continuous improvement and underscores our determination to address areas that contribute significantly to our environmental impact.

87.8 tCO<sub>2</sub>e/yr

Scope 1 & Scope 2 emissions

56.1 tCO<sub>2</sub>e/yr

Purchased goods and services (Scope 3)

8.2 tCO<sub>2</sub>e/yr

Transportation (Scope 3)

0.7 tCO<sub>2</sub>e/yr

Business travel (Scope 3)

42.3%

Contribution of Scope 3 emissions to the total carbon footprint



## PARTNERS & COLLOBORATERS

### KARBONWISE

At Ela Green School, we are committed to precision and transparency in our sustainability efforts. To ensure accurate and comprehensive reporting of our carbon footprint, we have partnered with the Karbonwise CO2 Accounting and Reporting tool.

### LEED & ARC

we take immense pride in our commitment to environmental stewardship, and our dedication to sustainability is underscored by our strategic utilization of LEED (Leadership in Energy and Environmental Design) and ARC (Performance Score) tools. This not only showcases our leadership but also serves as a powerful mechanism for monitoring and enhancing our sustainability performance.

Ela Green School is honored to be the first educational institution in India to achieve the prestigious LEED Platinum Certification under v4.1 Existing Buildings: Interiors.



# ACTION

Our commitment to sustainability is unwavering, and the upcoming year marks another chapter in our continuous efforts to make meaningful progress. Ela Green School is dedicated to fostering a learning environment that not only aligns with our values but also actively contributes to global climate goals.

The following sections will comprehensively outline our strategic approach. This roadmap has been crafted to ensure that every step we take aligns seamlessly with our net-zero goals and core values. Through strategic planning and execution, Ela Green School endeavors to be a beacon of sustainability in the educational landscape.

# ENVIRONMENT

Developing a comprehensive carbon emissions tracking system for procured goods and fostering environmentally responsible purchasing behavior by prioritizing transactions with sustainable suppliers is a strategic initiative aimed at aligning our organizational practices with global sustainability objectives.

This proactive approach not only demonstrates our commitment to reducing our carbon footprint but also contributes to fostering a marketplace that values and supports environmentally responsible practices.

## Emissions reductions

Developing a strategy to ensure student and staff travel is made more public transport oriented.

## Emissions offset

Invest in on-site and off-site renewable energy sources to offset carbon emissions.

## Transparency in reporting

Logging the carbon emissions related to purchased goods and encouraging greener choices through purchasing from sustainable suppliers.





## Faculty & Community engagement

## Policy Development

## GOVERNANCE

## SOCIAL

Performance goals are a good way to monitor and measure progress. Reporting performance can include details such as indicators identified, data collected and SDG-related activities accomplished. Clear and concrete performance goals make it easier to generate relevant, consistent and comparable data over time, in formats that your audience can understand and appreciate.

Kickstart MOOC subscription to broaden skillset

Conducting a volunteer day to give back to local community

Open the school grounds for public events

Open days for other educational institutions to observe the sustainable practices and operation adopted.

Make fair purchasing, encompassing environmental sustainability, local sourcing, and support for SMEs/MSMEs and diverse businesses.

Upholding our work place inclusion and harassment policy

Performance goals are a good way to monitor and measure progress. Reporting performance can include details such as indicators identified, data collected and SDG-related activities accomplished. Clear and concrete performance goals make it easier to generate relevant, consistent and comparable data over time, in formats that your audience can understand and appreciate.





# THANK YOU

The path to sustainability is not a destination; it is a journey, and for Ela Green School, this journey has just begun. We are invigorated by the prospects that lie ahead, eager to embrace new challenges, and committed to learning from our experiences. Our dedication to sustainability remains resolute, propelling us towards a future where our impact extends beyond the walls of our institution.

As we embark on this continuous journey of improvement, Ela Green School expresses gratitude to our community for their unwavering support. Together, we are creating a legacy of sustainability that will endure for generations to come.

